



THE WHITNEY

In the Whitney, everything is exactly how and where you want it. An intelligent, integrated living space provides the room you want with the flexibility you need. 4 bedrooms, 3.5 baths enable you to grow into your new home without the fuss and frustration of conventional homes. From preparing delicious meals in the Gourmet Kitchen to entertaining your closest family and friends in the open living room, you will enjoy life's everyday moments in a comfort you have never known. When you desire a home to feature the finest, look no further than the Whitney!



HIGHLAND
HOMES

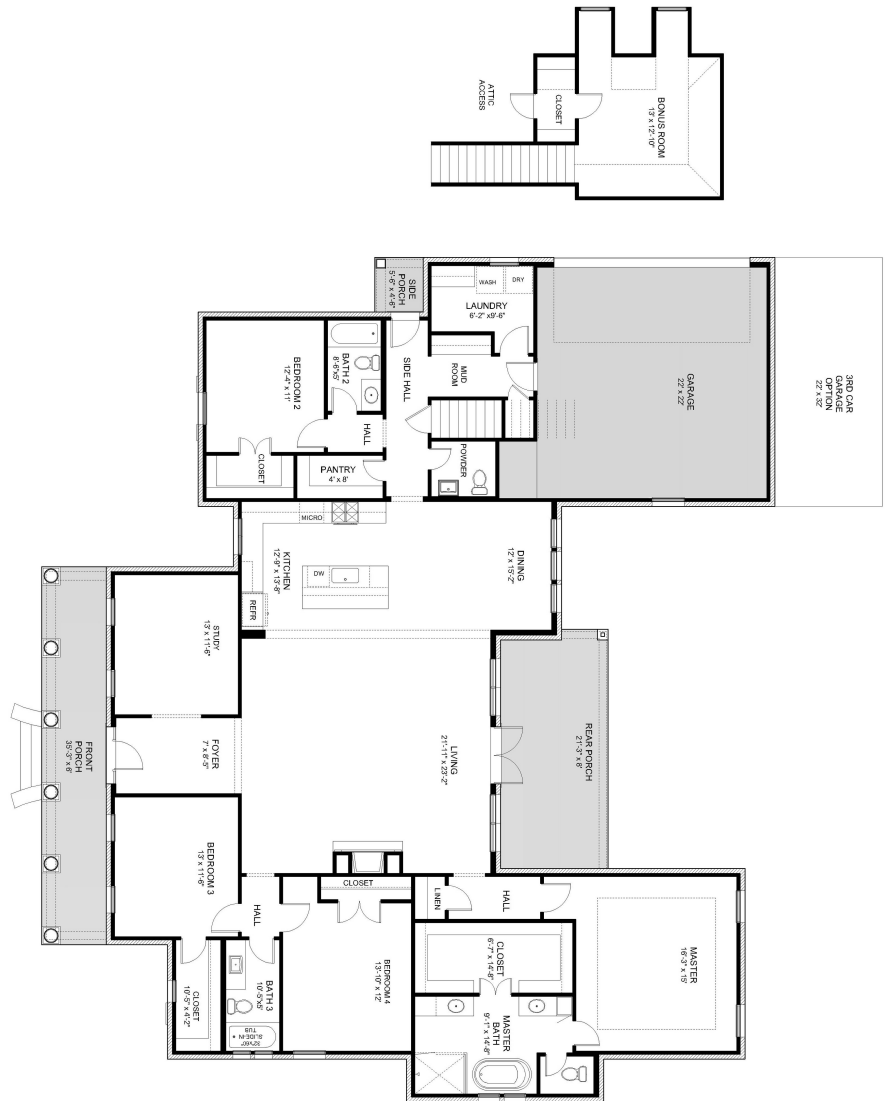

THE WHITNEY




HIGHLAND
 HOMES

Details

- ~ 2922 square feet
- ~ 4 bedrooms
- ~ 3.5 baths



Renderings not to scale. All measurements shown are approximate and not necessarily to scale. Location, size, and construction of doors, windows, walls, fireplaces, and any other items depicted may vary depending on elevation preference or choice of options and are subject to change without notice due to normal construction tolerances. The room sizes may vary slightly.

